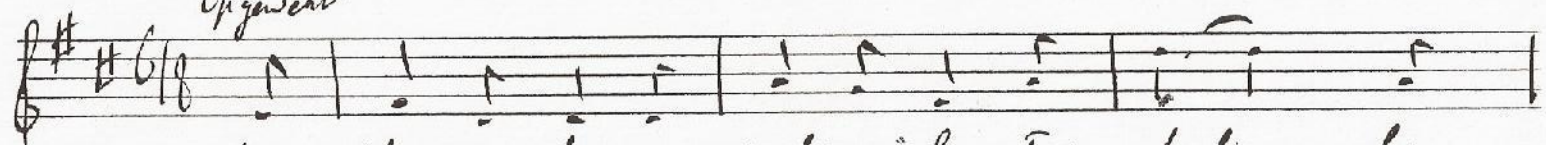
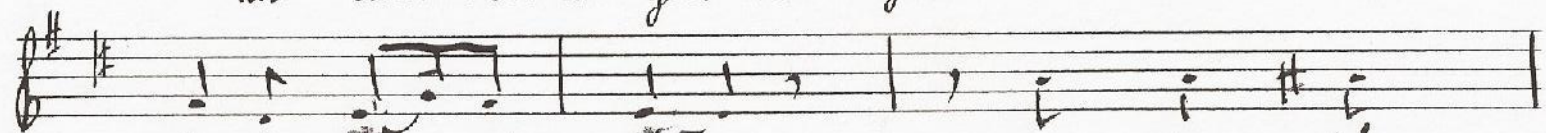


Lente boede

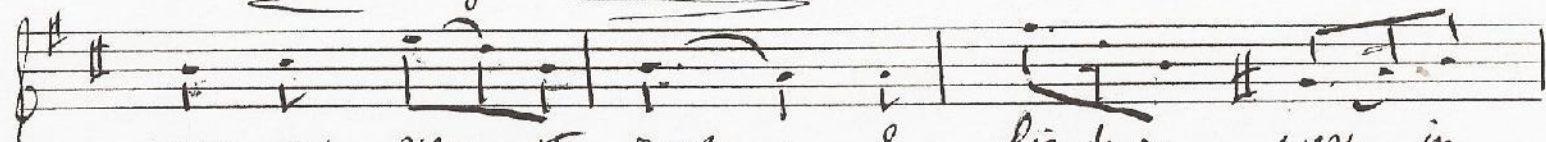
Opzweelv



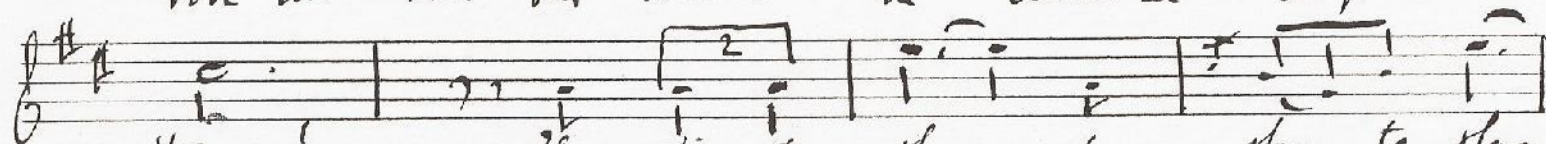
uw schoon ver-lan-gen wecht mijn lize Tot trek-ken



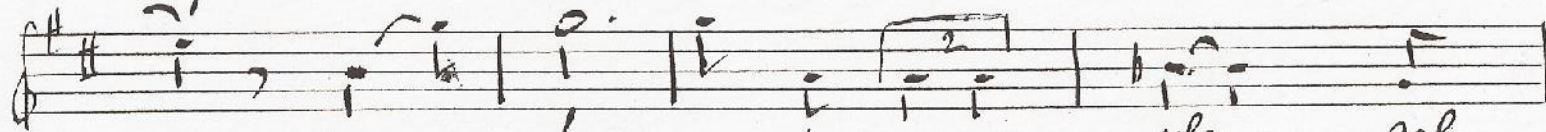
uw de vo-ger dāen Tot-dā il



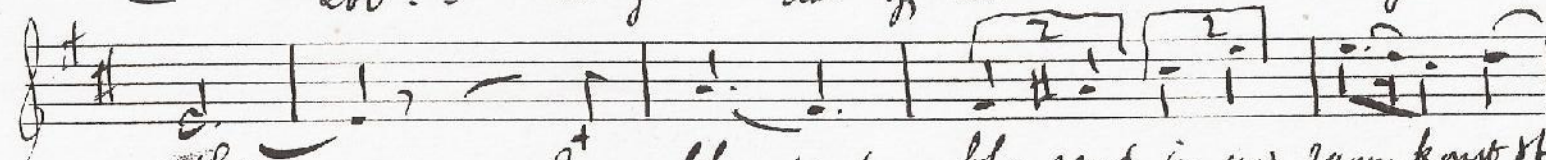
voor uw van ster rust In lie-de ren wey in



't groen! Ik lie te slaen te slaen te slaen



— zoov... hooy dat gi uw vlen-gel



sluit En blo-sent blo-gent in uw raam konst slaen:

Handwritten musical score on five staves. The music is written in treble clef with a key signature of one sharp (F#) and a common time signature (C). The lyrics are in Dutch. The score includes various musical notations such as slurs, ties, and dynamic markings like 'f' and 'ff'. The lyrics are: "God is de winter uit? Wie denkt er nog aan omkeren tijd, Aan sneeuw die tegenhouden. Waar de sneeuw die viel die hoe bron gant ster- ver- blyd in: - - 't bloei-en van - uw ziel - -".

God is de winter uit? Wie
denkt er nog aan omkeren tijd, Aan sneeuw die
tegenhouden.
Waar de sneeuw die viel die hoe
bron gant ster- ver- blyd in: - -
't bloei-en van - uw ziel - -